



QGIS – past, present and future

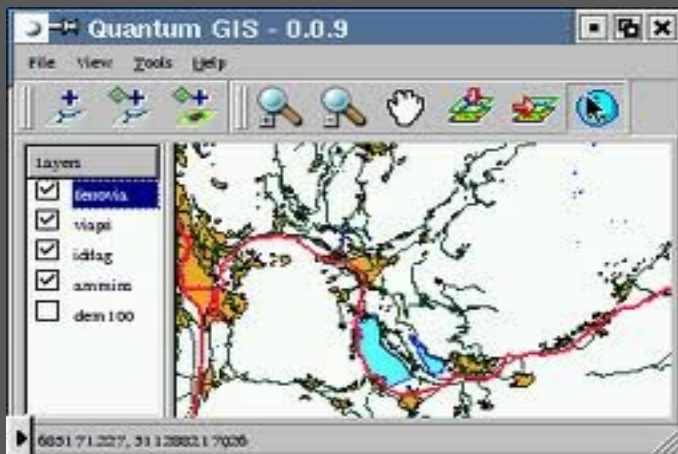
Dr. Marco Hugentobler
Sourcepole AG, Zürich
www.sourcepole.ch
Twitter: @sourcepole





The past

- Founded 2002 by Gary Sherman (Alaska)
- Started as a viewer for geospatial data (PostGIS and shapefile)
- Platform independent because of Qt libraries (first windows version 2005)
- Open source license (GPL 3)





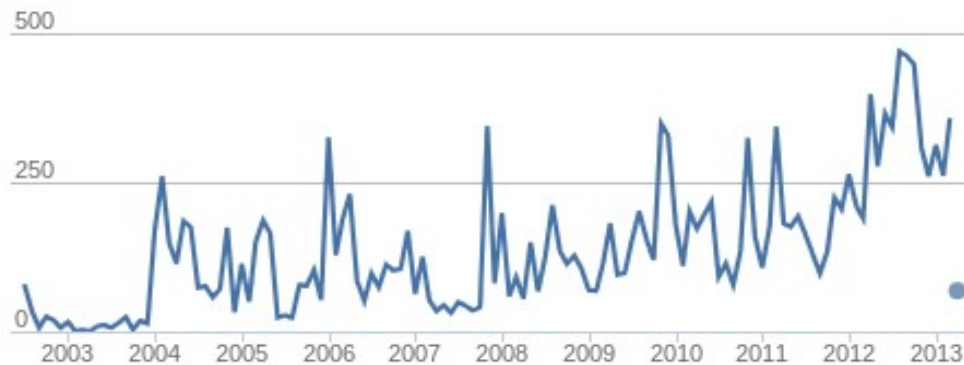
The past (2)

- Continuously attracted more people to work on the project and more users

Contributors per Month



Commits per Month





The present

- QGIS is no longer a geospatial viewer only, it is a GIS software suite
- Wikipedia 2013: “A software suite or application suite is a collection of computer programs, usually application software and programming software of related functionality, often sharing a more-or-less common user interface and some ability to smoothly exchange data with each other”



QGIS is a Desktop GIS

- **Access to a large number of vector / raster datasources**
 - New in 2.0: support for Oracle spatial
 - New in 2.0: support for MSSQL
- **Viewer functionality**
 - New in 2.0: raster resampling
- **Editing functionality**
 - A lot of editing functions and options
 - undo / redo
- **Vector / raster analysis**
 - New in 2.0: Sextante analysis framework
- **Smart placement of labels and diagrams**

QGIS has a print module (Composer)

- Convenient print layout by dragging item frames
- Different item types: map, scalebar, legend, arrows, text, html, image, attribute table
- New in 2.0:
 - Multipage layouts
 - Multicolumn legends
 - Overview map
 - Convenient item placement rulers and snap
 - Serial printing
- Demo



QGIS has a database manager

The screenshot shows the QGIS DB Manager window. On the left, a tree view displays the database structure: PostGIS > QGISCloud xnibbu_ajeuve > public > Fluesse. The 'Fluesse' table is selected. The main panel shows the 'Info' tab for the 'Fluesse' table.

Fluesse

General info

Relation type: Table
Owner: xnibbu_ajeuve
Pages: 17
Rows (estimation): 405
Rows (counted): 405
Privileges: select, insert, update, delete

PostGIS

Column: geom
Geometry: MULTILINESTRING
Dimension: 2
Spatial ref: CH1903 / LV03 (21781)
Estimated extent: 659511.00000, 224597.59375 - 716182.87500, 283004.93750
Extent: (unknown) ([find out](#))

Fields

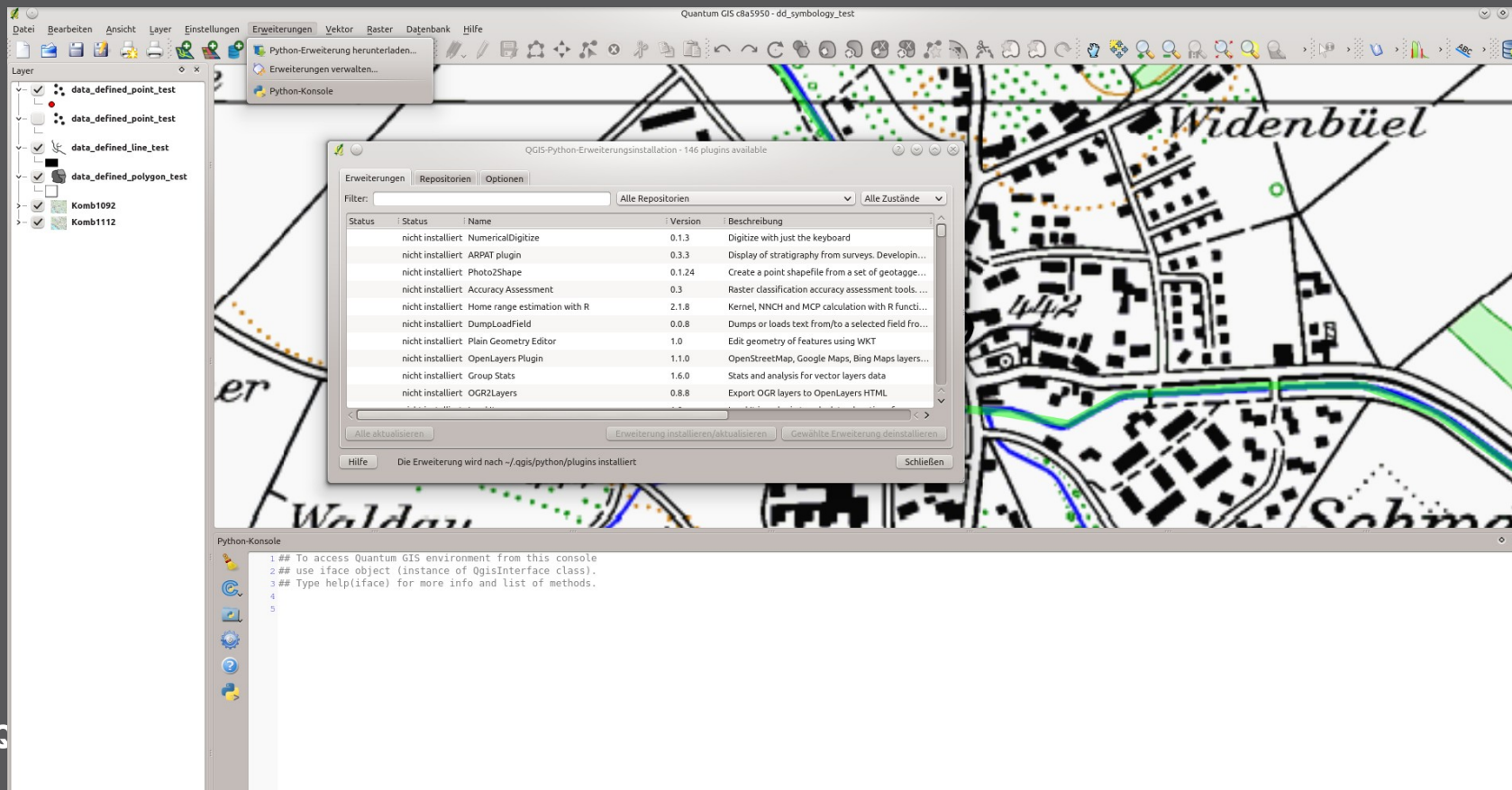
#	Name	Type	Length	Null	Default
1	id	int4	4	N	nextval("Fluesse_id_seq"::regclass)
2	geom	geometry (MultiLineString,21781)		Y	
3	fnode_	int4	4	Y	
4	tnode_	int4	4	Y	
5	lpoly_	int4	4	Y	
6	rpoly_	int4	4	Y	
7	length	numeric		Y	
8	fluesse_	int4	4	Y	
9	fluesse_id	int4	4	Y	
10	buwal_bww	int4	4	Y	
11	abschnitt	int4	4	Y	
12	code200	int4	4	Y	

QGIS has a datasource browser

- Browse existing datasources (files, databases, services)
- Convenient layer drag into the desktop window
- Straightforward database import with drag-and-drop
- Can be used as a standalone application or as a dock widget in QGIS

QGIS is extensible with plugins

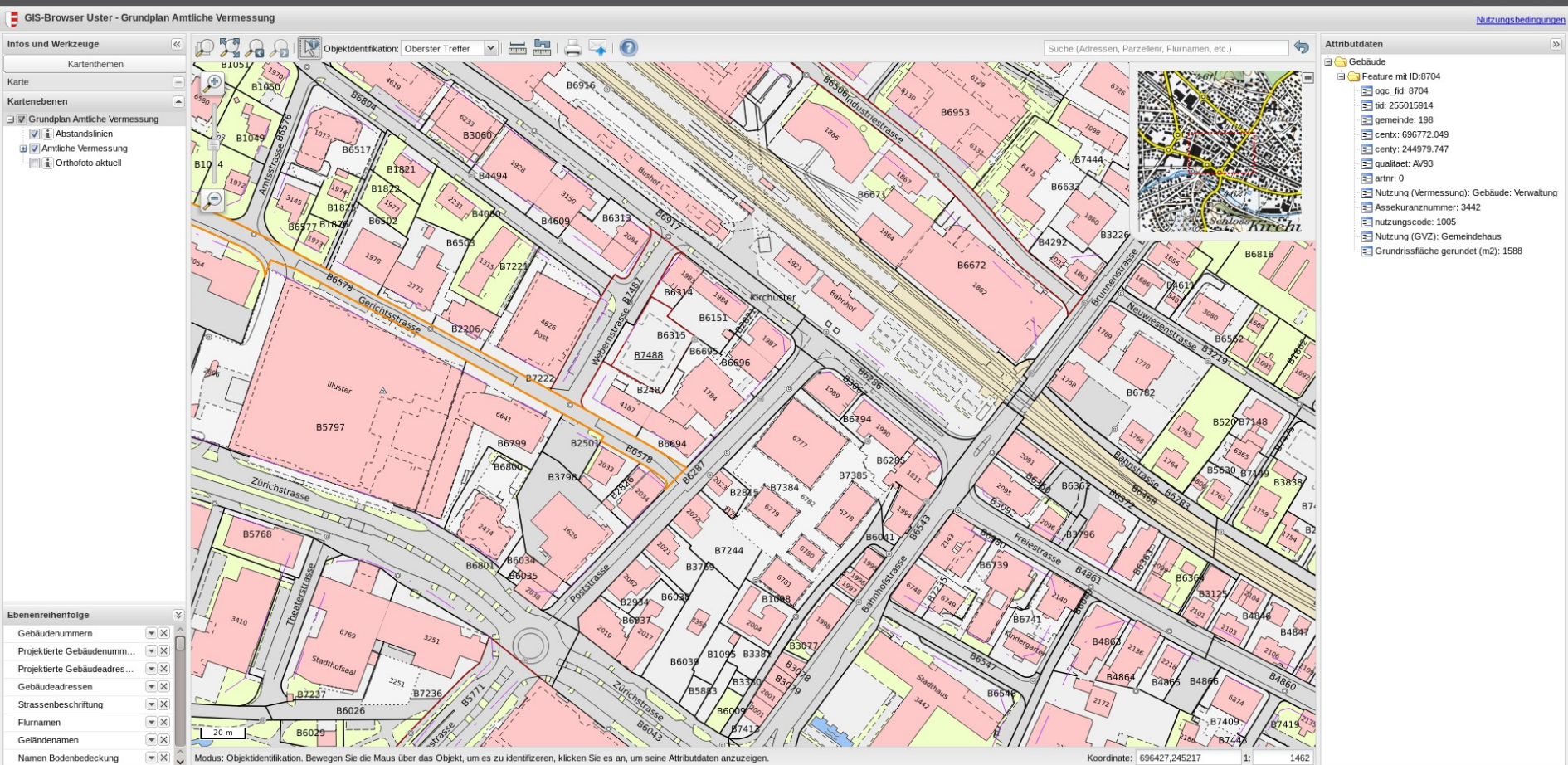
- C++ and python interface to program custom extensions
- A lot of already existing extensions can be downloaded with the python plugin installer





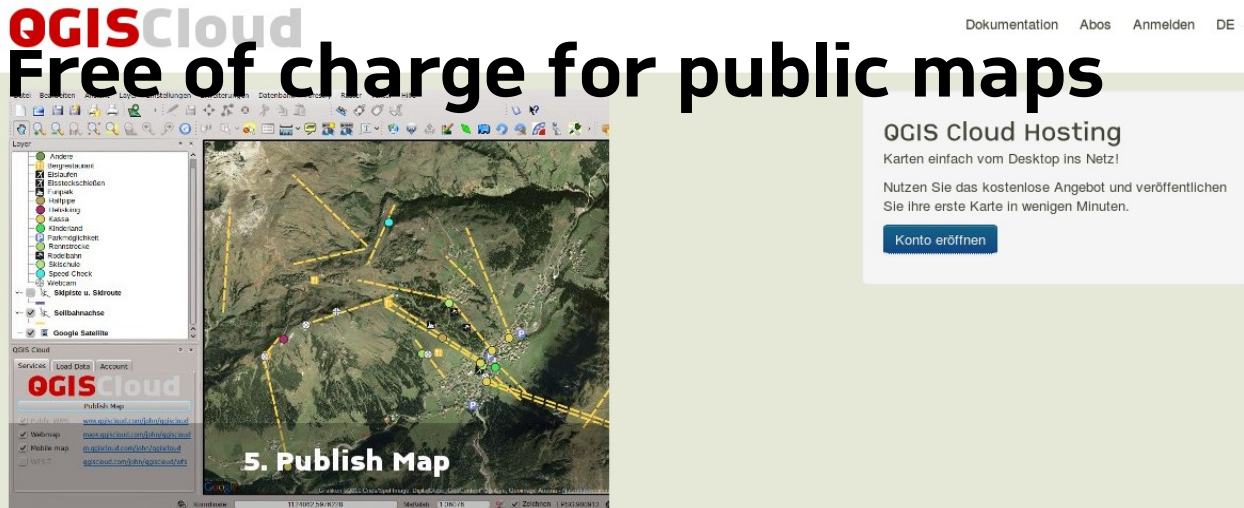
QGIS is a web GIS

- QGIS Server: WMS 1.3 / 1.1.1 Server
- QGIS Webclient / Lizmap Webclient



- Publish maps directly on the internet
- No server infrastructure / maintenance needed
- A plugin conveniently uploads the data / map configuration

➤ Free of charge for public maps

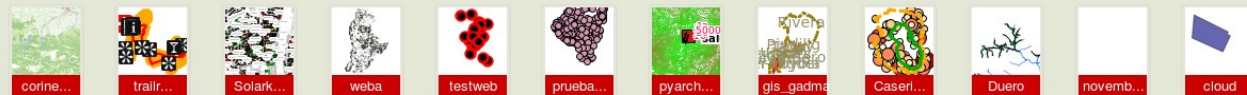


The screenshot shows the QGIS Cloud web interface. At the top, there's a navigation bar with links for 'Dokumentation', 'Abos', 'Anmelden', and 'DE'. Below this, a central panel displays a satellite map with yellow lines and points. To the right of the map, a white box contains the text 'QGIS Cloud Hosting' and 'Karten einfach vom Desktop ins Netz!'. Below this text, it says 'Nutzen Sie das kostenlose Angebot und veröffentlichen Sie Ihre erste Karte in wenigen Minuten.' and a blue button labeled 'Konto eröffnen'. On the left side of the map, there's a sidebar with a list of layers and a 'QGIS Cloud' section with a 'Publish Map' button. The text '5. Publish Map' is overlaid on the bottom left of the map area.

Aktuelle Karten



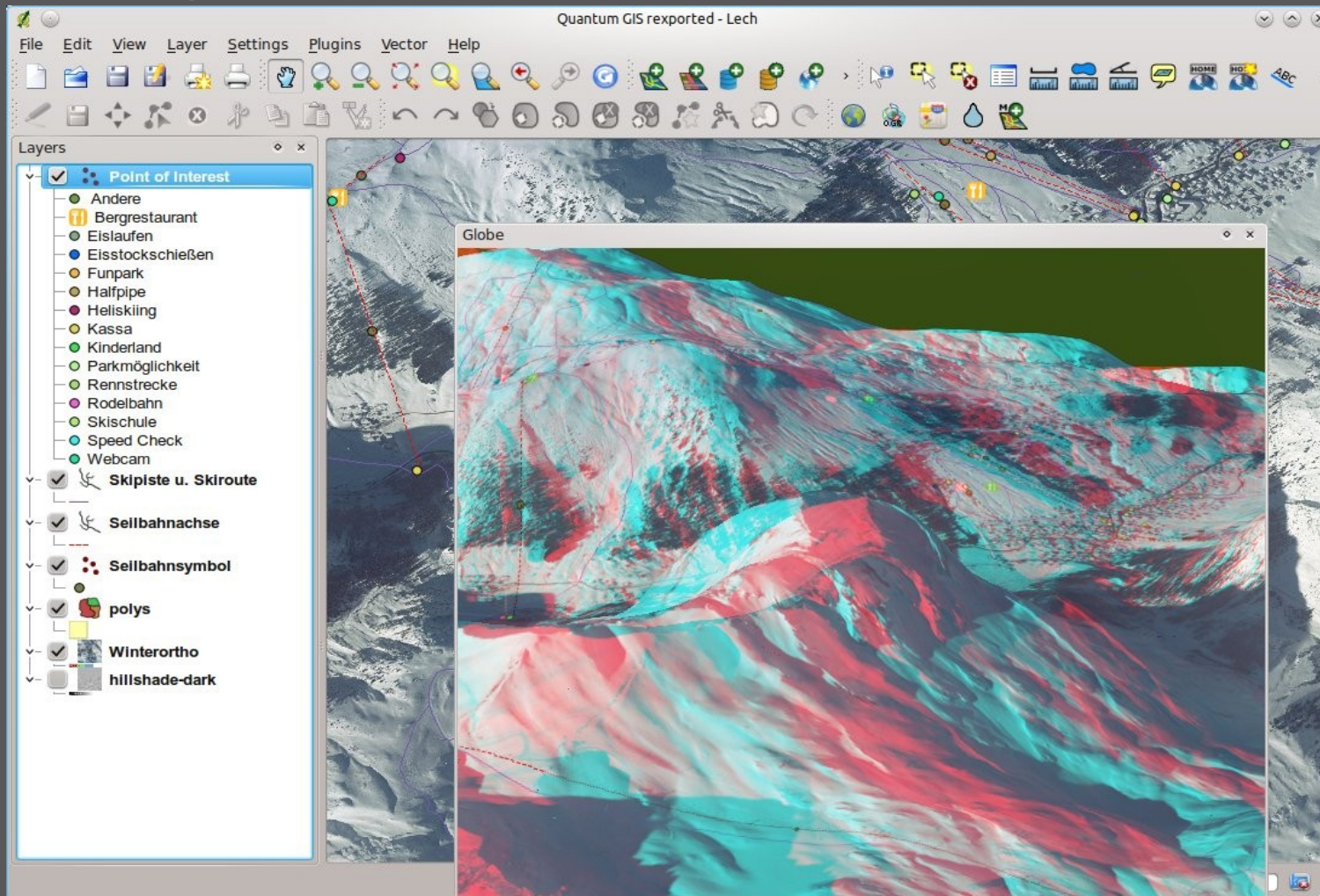
Beliebte Karten



QGIS has experimental modules

➤ Version for mobile devices

➤ 3D globe





QGIS has commercial support near your place

- www.qgis.org/en/commercial-support.html
- 24 service providers in 15 countries

Quantum GIS

Home | About QGIS | Community | Documentation | Download | Commercial Support | Events | News | Contact

Commercial Support

Do you plan to use QGIS in your company or organization, but worry about whether there is commercial support available? The QGIS project provides an alphabetical list, divided in categories, of support contractors, with their home page. Please note, that we take no responsibility for the accuracy, reliability or completeness of the provided information.

Core contributors

- 3liz** (based in France) offers a full range of services around QGIS, to escort all software users, from beginners to the insiders. Depending on your needs, 3liz offers training, support, QGIS projects, the Web mapping portal 3lizmap, based on Cartes2geo & QGIS services. 3liz also manages publication of data on the Web, and also proposes support, development and consulting on QGIS.
- berna.ch** (based in Switzerland) provides commercial support, training and programming for Quantum GIS and Quantum GIS on Android.
- Pauralia** (based in Italy, Portugal, and operating worldwide) provides development services (both core and plugins), training, and commercial support for Quantum GIS, QGIS, QGIS-Cloud, and PostgreSQL/PostGIS.
- GBD** (based in Düsseldorf, Germany) provides commercial consulting, training and support for Quantum GIS, QGIS and other FOSS applications.
- Lufin** Consulting (based in Stellenbosch, South Africa), we provide commercial support and training for Quantum GIS and QGIS.
- NEXTGIS** (based in Moscow, Russia), provides commercial support, custom programming and training for Quantum GIS, PostgreSQL and QGIS.
- OSLANDIA** (based in France) provides services on OpenSource GIS. OSlandia offers training, support, development and consulting, namely on QGIS and PostGIS.
- Soursopole** (based in Zurich, Switzerland and operating worldwide) provides FOSSGIS training, commercial support and maintenance contracts as well as cloud based geo hosting for Quantum GIS. With three leading core contributors Soursopole is able to offer sophisticated developments for QGIS.

Contributors

- Cartes2geo** (based in France) provides training for Quantum GIS.
- DMS** (based in Germany) provides training for Quantum GIS.
- Gaia3D** (based in South Korea) is a leading Open Source GIS company in Korea. Gaia3D offers professional development services, training, consulting and support for QGIS, PostGIS, QGIS-Cloud and QGIS-Server.
- iTopen** (based in Luxembourg) provides IT solutions for free companies.
- Lutra** Consulting (based in the UK) provides training, support and bespoke software development services for Quantum GIS.
- webmapper** (based in Utrecht, The Netherlands). We focus on creating usable web mapping solutions and consultancy services in the fields of web cartography and GIS.



The future

- **Version 2.0 announced for June 2013**
- **After 2.0:**
 - Rendering in threads
 - Handling of database relations / forms
 - ...



Thank you!



Marco Hugentobler
marco @ s o u r c e p o l e . c h
Twitter: @sourcepole